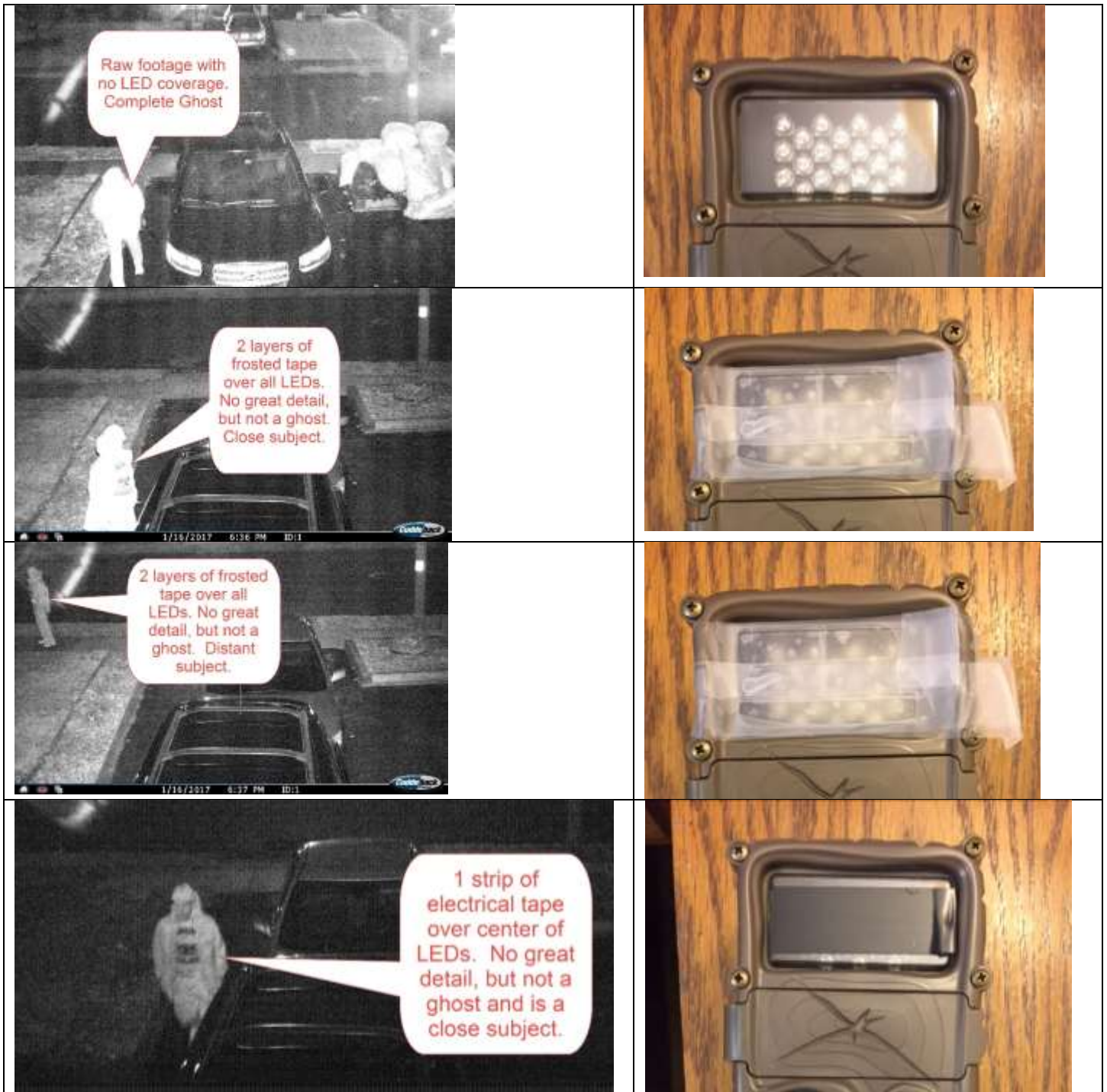


How To Reduce Ghosts from Cuddeback Nighttime Images – by Scott Newman.

I teach Photography. When I purchased my Cuddeback E2, I had problems with my nighttime images being washed out. Doing some research online and in the forums I found many people saying they had similar problems with nighttime images that contained “ghosts.” In photographic terms, the Strobe is too “hot.” In layperson’s terms, it outputs too much flash. That may sound strange since you are using InfraRed and not a flash, but the concept is the same. Here is a photographic treatment of the subject and a possible solution for everyone. Let me know if it helps.



2 strips of electrical tape over LEDs leaving 1/2 of top row of LEDs exposed. No great detail, but not a ghost and is a close subject.

